



2294 Old Hwy • Owens Cross Roads, AL 35763

Ph: 256.725.2500 or 866.725.8272

F: 877.333.8272 • WWW.TARAPOOLS.COM

**SPECIAL TRUE-L GRECIAN LEFT ORDER FORM**

Email to: sales@taramfg.com

Date: \_\_\_\_\_ Due: \_\_\_\_\_

**DISTRIBUTOR**

Company: \_\_\_\_\_

Branch: \_\_\_\_\_

Contact: \_\_\_\_\_ Phone: \_\_\_\_\_

E-Mail: \_\_\_\_\_

DISTRIBUTOR PO#: \_\_\_\_\_

**SHIPPING INSTRUCTIONS**

Branch:  Dealer:  Pick Up:

Ship Via: \_\_\_\_\_

**DEALER/INSTALLER**

Name: \_\_\_\_\_

Contact: \_\_\_\_\_ Phone: \_\_\_\_\_

Address: \_\_\_\_\_

CITY STATE ZIP

Email: \_\_\_\_\_

**ORDER INFORMATION**

Job Name: \_\_\_\_\_

Pattern: \_\_\_\_\_

No Tile:  Yes

Mixed Tile:  Yes

(If Yes) Tile Pattern: \_\_\_\_\_

Wall Pattern: \_\_\_\_\_

Floor Pattern: \_\_\_\_\_

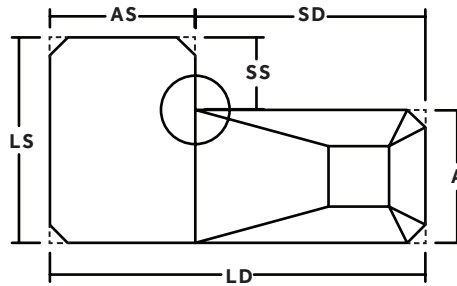
**MOUNTING**

Beaded:  Overlap:  Overlap Size: \_\_\_\_\_

**WARRANTY (Please Check One)**

Standard:  Silver:  Gold:

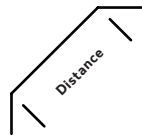
**COMMENTS**



**INSIDE CORNER**

- 90°
- DIAGONAL \_\_\_\_\_ (in.)
- RADIUS \_\_\_\_\_ (in.)

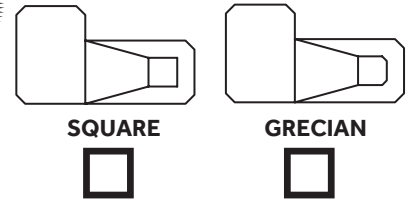
**GRECIAN CORNERS**



**!! NOTE !!  
MEASURE TO SQUARED  
CORNERS**

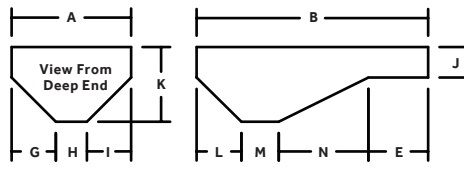
CORNER SIZE \_\_\_\_\_ (ft.) \_\_\_\_\_ (in.)

**HOPPER**



**SQUARE**

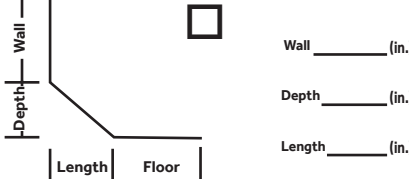
**GRECIAN**



**SAFETY LEDGE**

\_\_\_\_\_ (in.)

**COVE IN SHALLOW END**



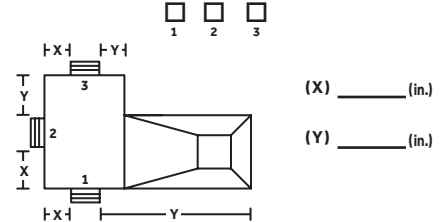
Wall \_\_\_\_\_ (in.)  
 Depth \_\_\_\_\_ (in.)  
 Length \_\_\_\_\_ (in.)

**MEASUREMENTS**

- (A): \_\_\_\_\_ (ft.) \_\_\_\_\_ (in.) (E): \_\_\_\_\_ (ft.) \_\_\_\_\_ (in.)
- (B): \_\_\_\_\_ (ft.) \_\_\_\_\_ (in.) (N): \_\_\_\_\_ (ft.) \_\_\_\_\_ (in.)
- (AS): \_\_\_\_\_ (ft.) \_\_\_\_\_ (in.) (M): \_\_\_\_\_ (ft.) \_\_\_\_\_ (in.)
- (LS): \_\_\_\_\_ (ft.) \_\_\_\_\_ (in.) (L): \_\_\_\_\_ (ft.) \_\_\_\_\_ (in.)
- (LD): \_\_\_\_\_ (ft.) \_\_\_\_\_ (in.) (G): \_\_\_\_\_ (ft.) \_\_\_\_\_ (in.)
- (SS): \_\_\_\_\_ (ft.) \_\_\_\_\_ (in.) (H): \_\_\_\_\_ (ft.) \_\_\_\_\_ (in.)
- (SD): \_\_\_\_\_ (ft.) \_\_\_\_\_ (in.) (I): \_\_\_\_\_ (ft.) \_\_\_\_\_ (in.)
- (J): \_\_\_\_\_ (ft.) \_\_\_\_\_ (in.)
- (K): \_\_\_\_\_ (ft.) \_\_\_\_\_ (in.)

**STEP DETAILS**

INDICATE POSITION OF VINYL STEP, IF APPLICABLE



(X) \_\_\_\_\_ (in.)  
 (Y) \_\_\_\_\_ (in.)

IS STEP INSIDE POOL PERIMETER?  
 YES  NO

IF STEP IS ACROSS SHALLOW END, IS THE STEP INCLUDED IN (B) LENGTH?  YES  NO

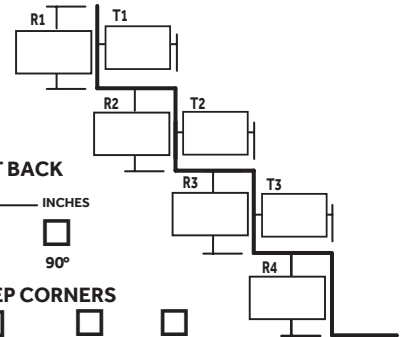
**STEP FASTENER?**

(Please choose one. If no boxes are checked we will not add a step fastener)

Rod Pocket  Bead Fastener  None

STEP FOAM?  1/8"  1/4"  None

**VINYL STEP**



**SET BACK**

\_\_\_\_\_ INCHES  
 45°  90°

**STEP CORNERS**

RADIUS  DIAGONAL  90°  
 \_\_\_\_\_ IN. \_\_\_\_\_ IN.

SureStep:  Matching  Other

Pattern: \_\_\_\_\_

**Self Check**  
 G+H+I=A?  
 E+N+M+L=B?  
 AS+SD=LD?  
 STEP RISERS=J?



2294 Old Hwy • Owens Cross Roads, AL 35763

Ph: 256.725.2500 or 866.725.8272

F: 877.333.8272 • WWW.TARAPOOLS.COM

## LINER ORDER CHECKLIST

Email to: sales@taramfg.com

### ORDER INFORMATION

- Did you Use a Tara Order Form and Fill it Out Completely?
- What is the Job Name? (We Recommend Using the Homeowners Last Name or Street Address)
- What is the Pattern? (Be Sure to Include mil)

### POINT-TO-POINT MEASUREMENTS

- What is the Distance Between Points A and B?
- Did you Indicate the Shallow and Deep End Breakpoints?

### POOL DIMENSIONS

- Did you Indicate the Corner Type and Size?
- Did you provide the Wall Height & Deep End Depth?
- Does the Width (A) = G+H+I?
- Does the Length (B) = E+L+M+N?
- Is the Step Radius or Straight on Oval, Radius or Freeform Pool Shape?
- Is the Step Included in the Overall Length or is the Measurement to the Front of the Step?

### VINYL COVERED STAIRS

- Did you Include the Location of the Step?
- Did you Include the Step Riser and Tread Measurements?
- Does the Sum of Riser Measurements Equal the Wall Height?
- What Type of Step Fasteners do you Need, Rod Pocket, Bead Fastener or None?
- Is there a Setback?

### GRECIAN POOLS

- Is Grecian Out-of-Square? (a point-to-point on a grecian will help prevent errors and only requires 14 points)
- Did you Provide the Hopper Shape?

### ROMAN END POOLS

- Did you Include the (W), (R) and (T) Measurements?
- Is it a Single or Double Roman End Pool?

### KIDNEY, LAZY "L", TRUE "L" POOLS

- Did you Indicate the Direction of Pool from Shallow End?